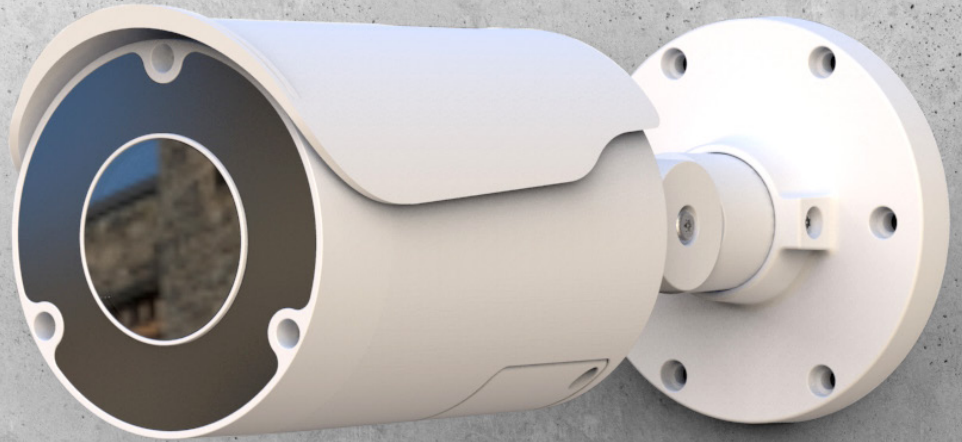


BULLET CAMERA

8 MP resolution and AI-based analytics

Securely access this cloud-managed camera from anywhere and from any device. It features onboard analytics and built-in IR, and you can take advantage of new features via automatic updates.



LONG DISTANCE VIEWING

Able to see objects from great distances, this camera is ideal for capturing images—like people and license plates—from far away; think parking lots, long hallways, sports complexes, etc.



STRONG VISUAL DETERRENT

This camera is a great choice when you want people to know they're being watched; research shows that areas monitored by bullets are less likely to be targeted.



OVERCOME HARSH LIGHTING

Counteract the many lighting challenges that can exist in a scene, like intense backlighting, shadows and reflective glare from windows, headlights, and wet surfaces.



SEE IN THE DARK

Thanks to the camera's integrated IR, you'll get high-quality video—even in total darkness—from up to 131 ft (40 m) away.



DIMINISH NUISANCE ALARMS

The camera can detect motion triggered by a person and/or vehicle vs. motion triggered by things like blowing leaves, so you can respond to genuine threats quicker.

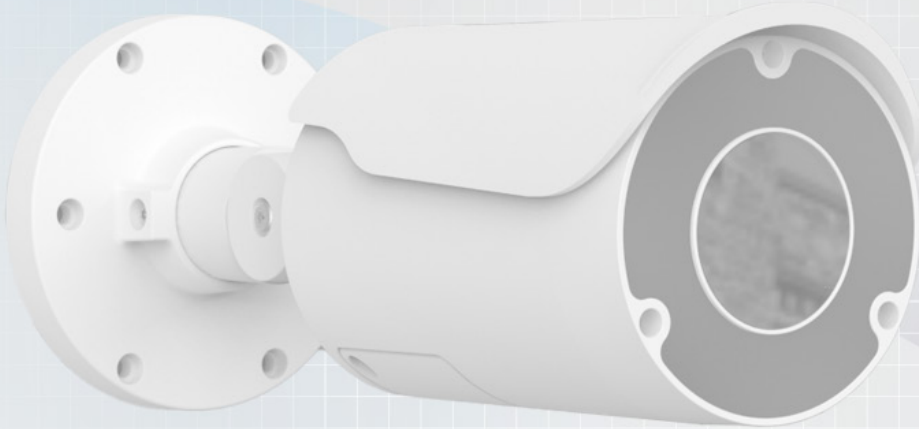


FASTER INVESTIGATIONS

Object-based motion detection lets you filter out non-relevant video for faster incident resolution, and also reduces storage requirements.



THIS POWERFUL VISUAL DETERRENT FEATURES A NUMBER OF ADVANTAGES



4K

4K ultra HD resolution for undisputable identification of people and objects



Lens ensures objects close to AND far away stay in focus simultaneously



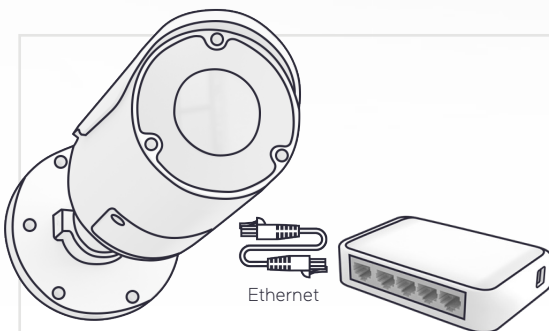
Starlight low-light technology delivers color images in dark scenes



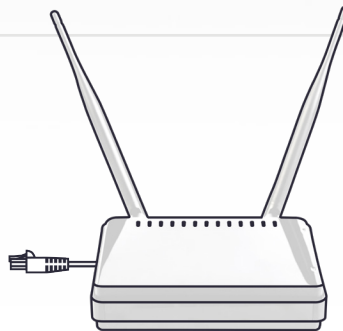
Bullet cameras are well-known for their watertight and fast, straightforward installations

Featuring onboard storage and bandwidth-friendly smart encoding, this camera requires just a single Ethernet PoE connection to operate. Our PoE Port Combiner/Splitter lets you co-locate a second camera on that same PoE drop, making it easier and more cost-effective to add additional coverage for high-risk areas.

HERE'S HOW IT COMES TOGETHER



Install your camera and plug it into a PoE switch to power it up.

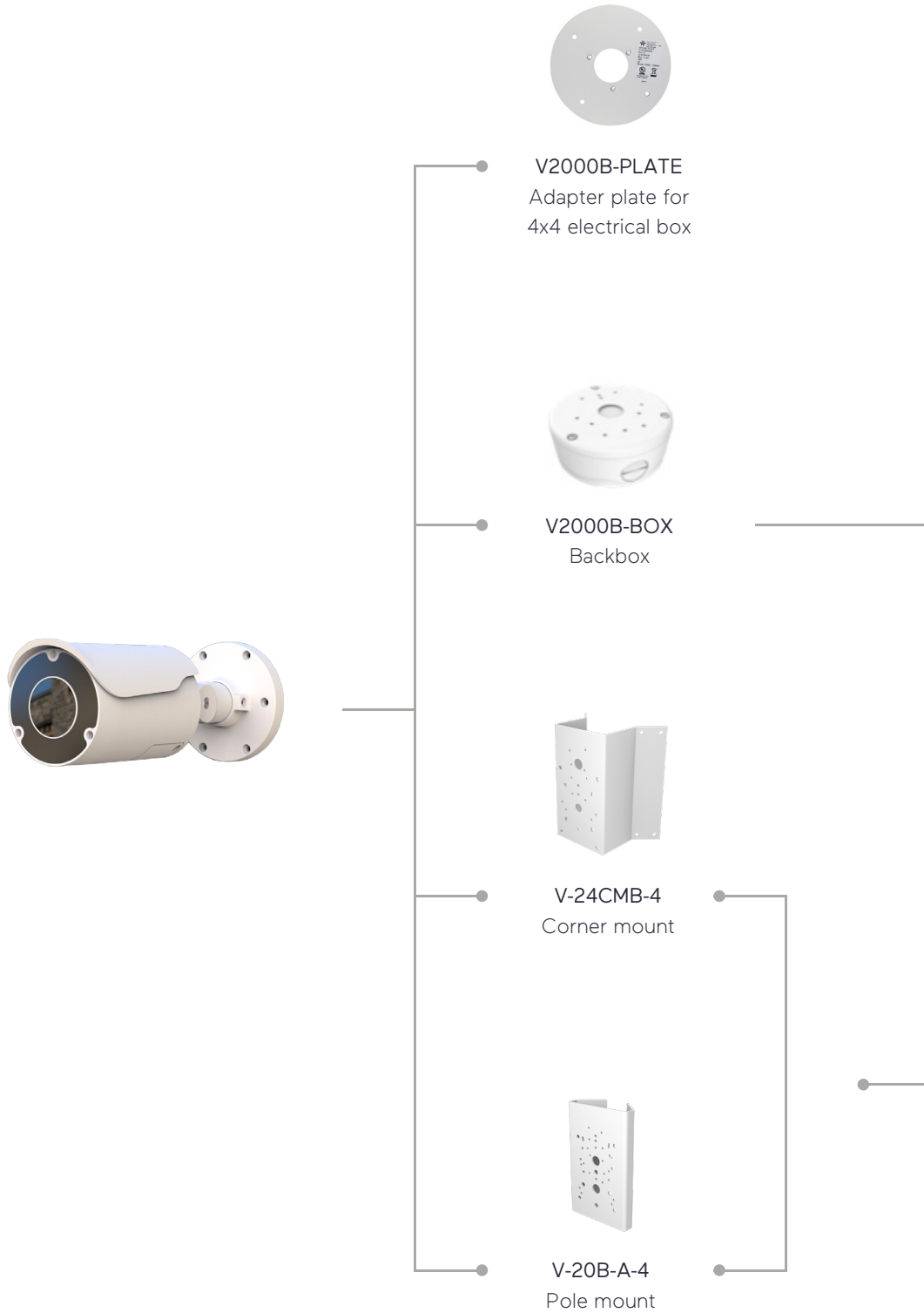


Connect the PoE switch to your router so you can access your camera via the cloud.



Your new camera is up and running and you'll see it in your Anavio portal.

MOUNTING OPTIONS



SPECIFICATIONS

CAMERA

Image Sensor
1/1.8 in.

Max Resolution
3840x2160 (8 MP)

Image Settings
Flip, mirror, corridor

AI-Based Object Classification Analytics
Vehicles, people, animals

Electronic Shutter Speed
Auto (1/2 ~ 1/10,000 sec)

Day/Night Performance
True day/night (IR cut filter)

Wide Dynamic Range
True WDR; 120 dB

Minimum Illumination (@ 30 IRE)
Color:
0.02 lux

BW:
IR Off: 0.01 lux
IR On: 0 lux

IR Distance
Smart IR/Adaptive IR;
131 ft (40 m)

LENSES

Focal Length
3.6-10 mm; 2.8X optical zoom

Max. Aperture
f/1.5 - f/2.8

Iris
P-Iris

Zoom/Focus Adjust
Motorized zoom and focus

Field-of-View
Horizontal: 46° (tele) - 98° (wide)
Vertical: 26° (tele) - 54° (wide)

ELECTRICAL

Input Power
PoE IEEE 802.3at class 4; 12 VDC (±10%); 24 VAC (+20%/-10%)

Current
PoE: 0.41 A ; 12 VDC: 1.64 A;
24 VAC: 0.82 A

Power Consumption
IR and Heaters On: 21.6 W
IR Off, Heaters On: 13.8 W
IR Off, Heaters Off: 6.6 W

VIDEO TRANSMISSION

Network
10/100Base-T/TX: RJ-45

Image Compression
H.264; H.265; M-JPEG

Resolution
High Quality: 3840x2160 (3000 Kbps)
Standard Quality: 1280x720 (600 Kbps)

Frame Rate
24 fps

Alarms
1 alarm input/1 alarm output

Audio
1 audio input/1 audio output

ENVIRONMENTAL

Dual Heater System
For low temperature operation:
Heater turns on at -40° F (-40° C)
and off at 59° F (15° C)

For defog operation:
Heater turns on at -40° F (-40° C)
and off at 140° F (60° C)

Operating Conditions
Temperature: -40° to 140° F
(-40° to 60° C)

Humidity
Up to 90%, non-condensing

SPECIFICATIONS

CONTROLS + CONNECTORS

Connectors

Pigtail cable; optional conduit backbox

Power

12 VDC/24 VAC: terminal block

PoE/Network

RJ-45 CAT5

Alarm

Terminal block

Audio

Terminal block

Micro SD card slot

SDHC/SDXC card (1 TB, included)

MECHANICAL

Construction

Enclosure: White aluminum

Sunshield: Polycarbonate + ABS

Camera Angle of Adjustment

Adjustable using integral wall mount:

Pan: $\pm 360^\circ$; Tilt: $0^\circ - 90^\circ$;

Rotate: $\pm 360^\circ$

Dimensions (LxD)

10.3 in. (261 mm) x 3.5 in. (89 mm)

Weight

4.0 lb (1.8 kg)

REGULATORY

Approvals

UL, FCC Class A, CE, IP67, IK10
(including front glass), RoHS

Certifications

NDAA, GSA, TAA

Country of Origin

Taiwan



ORDERING INFORMATION

CAMERA

VA-BVF08A-1TB
8 MP Bullet Camera with 1 TB storage

CAMERA CONNECTION LICENSES

VA-CLIC1Y
1-Year Camera License

VA-CLIC3Y
3-Year Camera License

VA-CLIC5Y
5-Year Camera License

VA-CLIC10Y
10-Year Camera License

ACCESSORIES

V-POE-CS2
Combiner/Splitter for co-locating any two Anavio cameras

V-POC-1KIT
PoE-to-Coax converter (single-channel)

V-POC-4KIT
PoE-to-Coax converter (4-channel)

V-POC-8KIT
PoE-to-Coax converter (8-channel)

V-POC-RMP
Rack mount unit for 100W/240W power supply

V-POC-RM4
Rack mount unit for Base 4 or Base 8 units

Please contact your Vicon sales representative for more information.



Vicon Data Sheet Number: 8009-7338-00-00

Specifications subject to change without notice.
Vicon and their logos are registered trademarks of Vicon Industries Inc.
Copyright © 2023 Vicon Industries Inc. All rights reserved.

