

MICRO DOME CAMERA

5 MP resolution and AI-based analytics

Securely access this cloud-managed camera from anywhere and from any device. It features onboard analytics and built-in IR, and you can take advantage of new features via automatic updates.



LOW PROFILE DESIGN

This compact camera is just four inches in diameter, making it ideal for discreet, aesthetic installations like classrooms, reception desks, and administrative offices.



GET THE BIG PICTURE

The camera's 2.8 mm lens delivers a nice wide-angle view of the entire area for complete situational awareness, indoors or outdoors.



TAMPER-PROOF

The housing contains vandal-resistant components, and it will notify you in real-time if someone tries to move, block, silly string, or spray paint it.



SEE COLORS IN THE DARK

Starlight low-light technology lets you see colors in dark scenes, so you'll be able to accurately identify critical details like hair color, clothing color, etc.



DIMINISH NUISANCE ALARMS

The camera can detect motion triggered by a person and/or vehicle vs. motion triggered by things like shadows and swaying trees, so you can respond to genuine threats quicker.



FASTER INVESTIGATIONS

Object-based motion detection lets you filter out non-relevant video for faster incident resolution, and also reduces storage requirement.



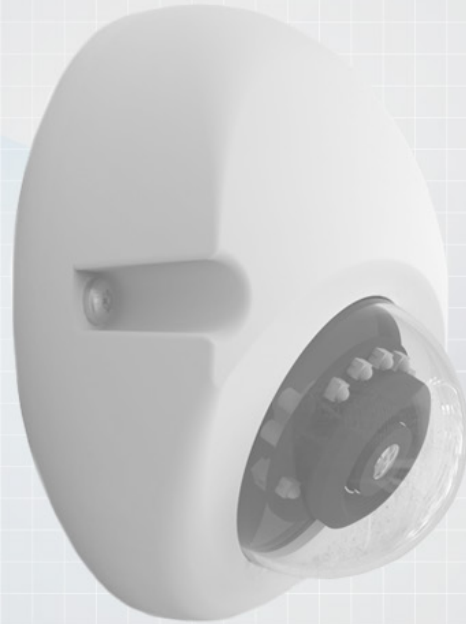
THIS LOW-PROFILE, INTELLIGENT CAMERA OFFERS A NUMBER OF ADVANTAGES



Invisible IR delivers high-quality video—even in total darkness—from up to 49 ft (15 m) away



Lens ensures objects close to AND far away from camera stay in focus simultaneously



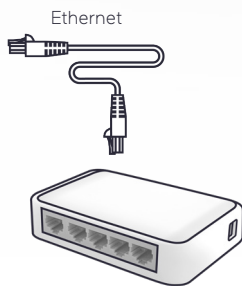
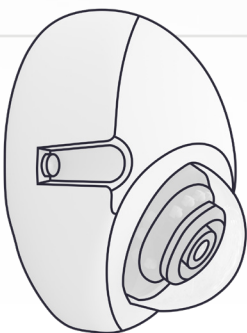
“Corridor mode” maximizes the camera’s view in narrow scenes, like hallways



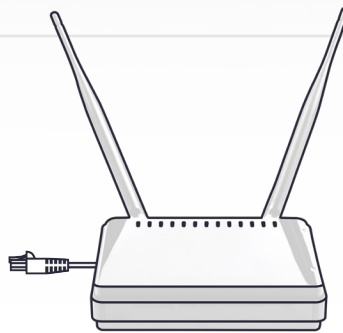
Integrated microphone lets you hear what’s happening in the scene for additional intel

Featuring onboard storage and bandwidth-friendly smart encoding, this camera requires just a single Ethernet PoE connection to operate. Our PoE Port Combiner/Splitter lets you co-locate a second camera on that same PoE drop, making it easier and more cost-effective to add additional coverage for high-risk areas.

HERE’S HOW IT COMES TOGETHER



Install your camera and plug it into a PoE switch to power it up.



Connect the PoE switch to your router so you can access your camera via the cloud.



Your new camera is up and running and you’ll see it in your Anavio portal.

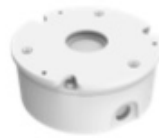
MOUNTING OPTIONS



V2XXX-WDG
Wedge angled base



V2000D-MICRO-PLATE
Adapter plate for
4x4 electrical box



V2000D-MICRO-BOX
Backbox



V2XXXD-ADPT
Adapter Plate

+



V2XXXD-PM
Pendant mount



V2XXX-WDG-PLATE
Adapter plate for
4x4 electrical box



SVFT-UCM-1
Ceiling mount

SPECIFICATIONS

CAMERA

Image Sensor
1/2.8 in.

Max Resolution
2592x1944 (5 MP)

Image Settings
Flip, mirror, corridor

AI-Based Object Classification Analytics
Vehicles, people, animals

Electronic Shutter Speed
Auto (1/2 ~ 1/10,000 sec)

Day/Night Performance
True day/night (IR cut filter)

Wide Dynamic Range
True WDR; 120 dB

Minimum Illumination (@ 30 IRE)
Color:
0.03 lux

BW:
IR Off: 0.01 lux
IR On: 0 lux

IR Distance
Smart IR/Adaptive IR;
49 ft (15 m)

ENVIRONMENTAL

Operating Temperature
-22° to 131° F (-30° to 55° C)

Humidity
Up to 90%, non-condensing

LENSES

Focal Length
2.8 mm

Max. Aperture
f/1.8

Iris
Fixed

Zoom/Focus Adjust
Fixed

Field-of-View
Horizontal: 104°
Vertical: 78°

VIDEO TRANSMISSION

Network
10/100Base-T/TX: RJ-45

Image Compression
H.264; H.265; M-JPEG

Resolution
High Quality: 2592x1944 (1500 Kbps)
Standard Quality: 720x544 (300 Kbps)

Frame Rate
24 fps

Audio
Built-in speaker and microphone

MECHANICAL

Construction
Dome body: White aluminum
Dome bubble: Polycarbonate

Camera Angle of Adjustment
3-axis adjustment: Pan: 0° - 180°;
Tilt: 0° - 80°; Rotate: ±355°

Dimensions (HxD)
2.2 x 4.3 in.
(57 x 110 mm)

Weight
1.65 lb (0.75 kg)

ELECTRICAL

Input Power
PoE IEEE 802.3af class 3

Current
0.28 A

Power Consumption
IR On: 9 W
IR Off: 6.6 W

SPECIFICATIONS

CONTROLS + CONNECTORS

Connectors

Pigtail cable; optional conduit backbox

PoE/Network

RJ-45 CAT5

Micro SD card slot

SDHC/SDXC card (512 GB, included)

REGULATORY

Approvals

UL, FCC Class A, CE, IP67,
IK10, RoHS

Certifications

NDAA, GSA, TAA

Country of Origin

Taiwan



ORDERING INFORMATION

CAMERA

VA-DLP05A-512
5 MP Micro Dome with
512 GB storage

CAMERA CONNECTION LICENSES

VA-CLIC1Y
1-Year Camera License

VA-CLIC3Y
3-Year Camera License

VA-CLIC5Y
5-Year Camera License

VA-CLIC10Y
10-Year Camera License

ACCESSORIES

V-POE-CS2
Combiner/Splitter for co-locating
any two Anavio cameras

V-POC-1KIT
PoE-to-Coax converter (single-channel)

V-POC-4KIT
PoE-to-Coax converter (4-channel)

V-POC-8KIT
PoE-to-Coax converter (8-channel)

V-POC-RMP
Rack mount unit for 100W/240W
power supply

V-POC-RM4
Rack mount unit for Base 4
or Base 8 units

Please contact your Vicon sales representative for more information.



Vicon Data Sheet Number: 8009-7340-00-00

Specifications subject to change without notice.
Vicon and their logos are registered trademarks of Vicon Industries Inc.
Copyright © 2023 Vicon Industries Inc. All rights reserved.

